

TECH RANGE: TECH BIN - APTB30

Product Overview

A Plus Plastics range of small part bins branded Tech Bins provide a solution to storing various sized items in an efficient manner allowing for better access and stock keeping control.


Our range of trays are manufactured from polypropylene with 20% Talc included for improved strength. Our bins and trays have been designed and manufactured to be lightweight and durable.

The range provides a variety of bins and trays that can be used in many different environments to safely store and organise everyday items in the work place.

Dividers are also available with our Tech Bins to further maximise the efficiency in storing of items in the workplace, further enhancing accessibility and control.



Tech Bin: APTB30
Technical Specifications

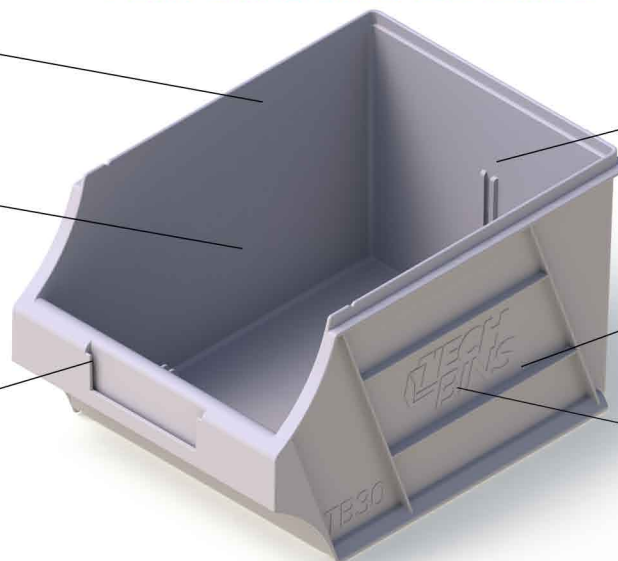
	
✓ Specifications (industry standard):	L 280mm x W 204mm x H 164mm
✓ Weight (industry standard):	514g
✓ Carton quantity:	4 units
✓ Cartons per pallet:	60 cartons
✓ Pallet quantity:	240 units
✓ MOQ for orders:	1 carton
✓ Material:	Industrial strength – made of 20% Talc filled Polypropylene

FEATURES AND BENEFITS

Stackable
When turned 180 degrees they become stackable (without lids)

Custom Colours
Custom colours are available
MOQ of 300 units

Label Slot
Each Bin has an area to slide a label in to mark the contents of each Bin.



Divider Slot
The APTB30 can be divided up into two compartments using the specified divider

Polypropylene
Made of 20% Talc filled polypropylene

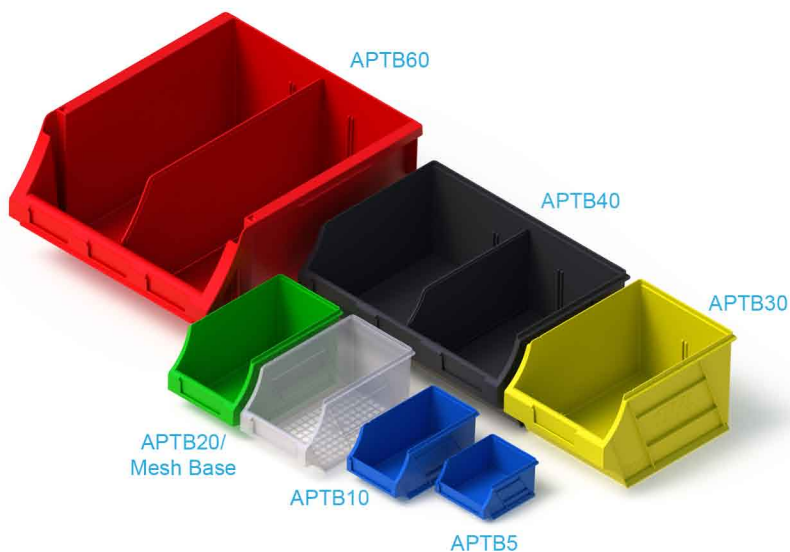
Different Colours
Available in a variety of stock colours

For More Information Visit www.aplusplastics.com.au

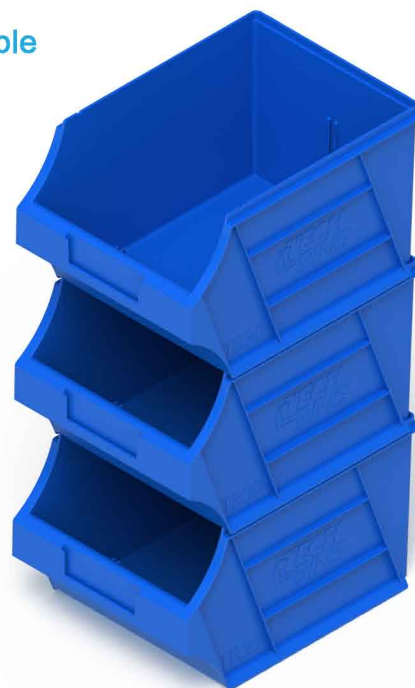


TECH RANGE: TECH BIN - APTB30

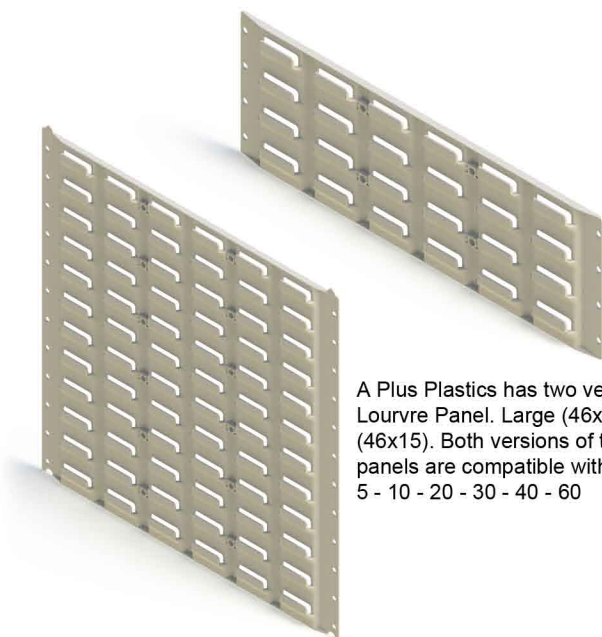
Family Photo



Stackable

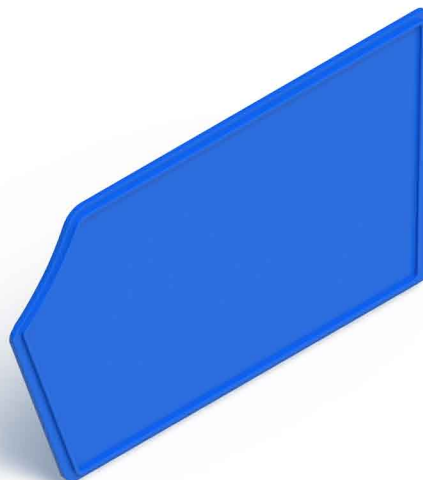


Louvre Panels



A Plus Plastics has two versions of the Louvre Panel. Large (46x46) and small (46x15). Both versions of the Louvre panels are compatible with the APTB 5 - 10 - 20 - 30 - 40 - 60

Divider To Suit APTB30-40



For More Information Visit www.aplusplastics.com.au

